

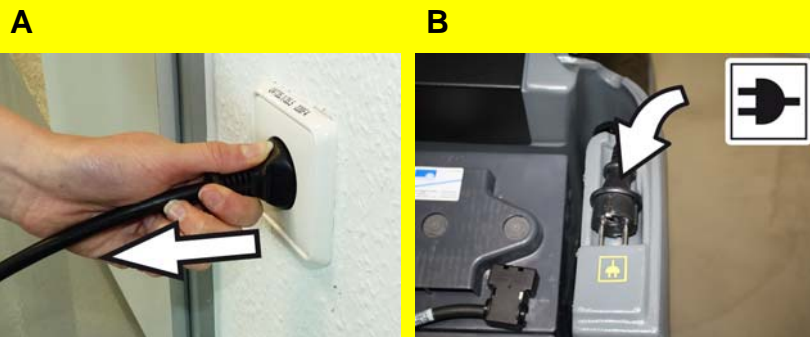
Warning

These are only brief instructions! Please read and comply with these instructions prior to using or servicing your appliance.

The non-compliance of the operating and safety instructions may lead to damages of the appliance and to dangers for the operator and other persons.

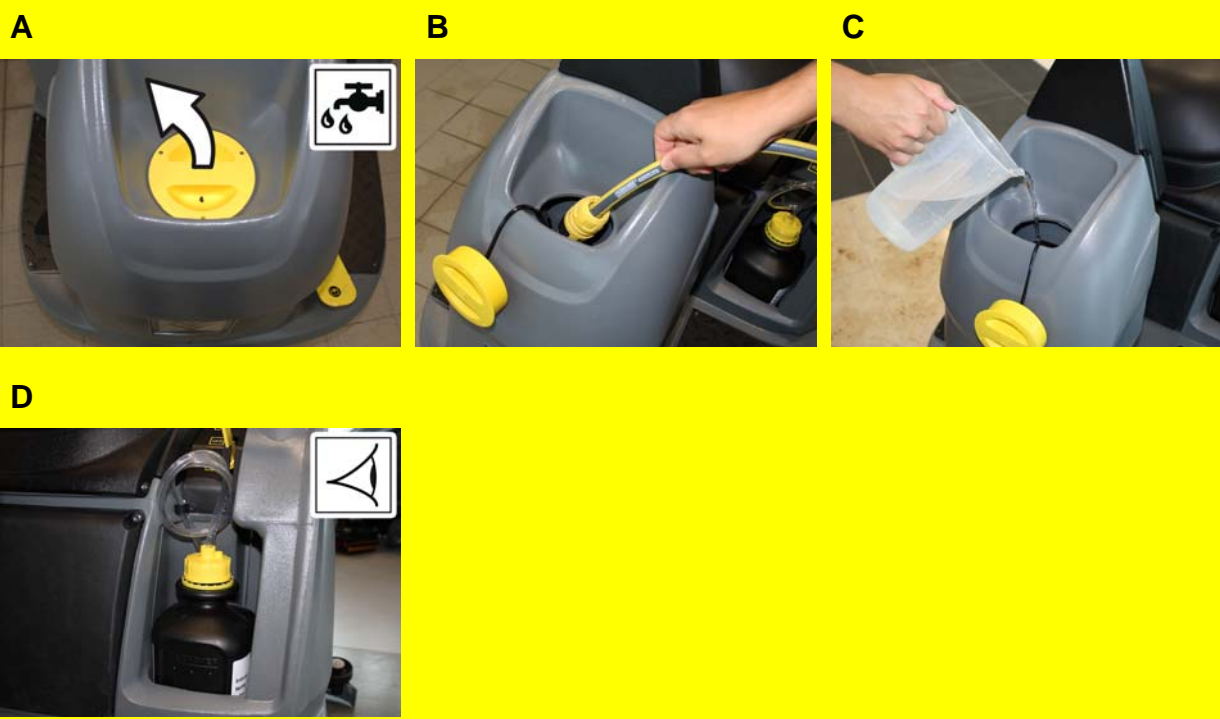
Start up

1



- A Unplug the charger from the mains.
- B Place the mains cable into the storage compartment.
Swivel the seat downward.

2



- A Open the cover of the fresh water reservoir.
- B Fill fresh water (max. 60 °C) until 15 mm below the upper edge of the tank.
- Model without dosing equipment "Dose"**
- C Pour in detergent.
Close the cover of the fresh water reservoir.
- Model with dosing equipment "Dose"**
- D Place the detergent bottle into the device.
Close the bottle lid.
Insert the suction hose of the dosaging equipment into the bottle.

Operation

1



Starting the machine

- A Sit on the seat and set main switch to "1".

2

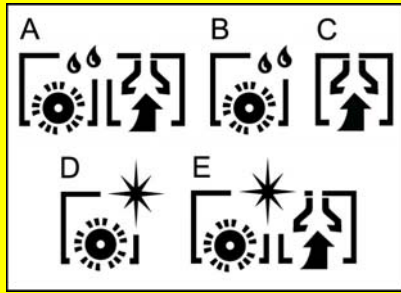


Driving

- A Set the drive direction using the drive direction button at the operator console.
- B Determine the driving speed by pressing the drive pedal.
- C Stop the machine: Release the drive pedal.

Operation

3



Cleaning Programs

- A **Scrubbing suction**
Wet clean the floor and vacuum up dirt water.
- B **Wet scrubbing**
Wet clean the floor and allow the detergent to react.
- C **Vacuuming**
Vacuum the wastewater.
- D **Polishing**
Polishing the floor without the application of liquid.
- E **Scrub the floor without applying water (vacuum polishing)**
Polish the floor without applying any fluid and suck in the polishing dust.

4



Info button (only Adv. model)

- Use the Info button to select the menu items and do the settings.
- A Turning the button to the right/left scrolls through the menus forward/ backward. The selected setting gets accepted by pressing the button.

5



Setting the water quantity

- A Set the water quantity at the regulation knob according to the dirt level and the type of flooring.

6



Lower the cleaning head

- A Press down the rear surface of the pedal to raise/lower the cleaning head, release and let the pedal move upwards. The brush drive will start as soon as the cleaning head is lowered.

7

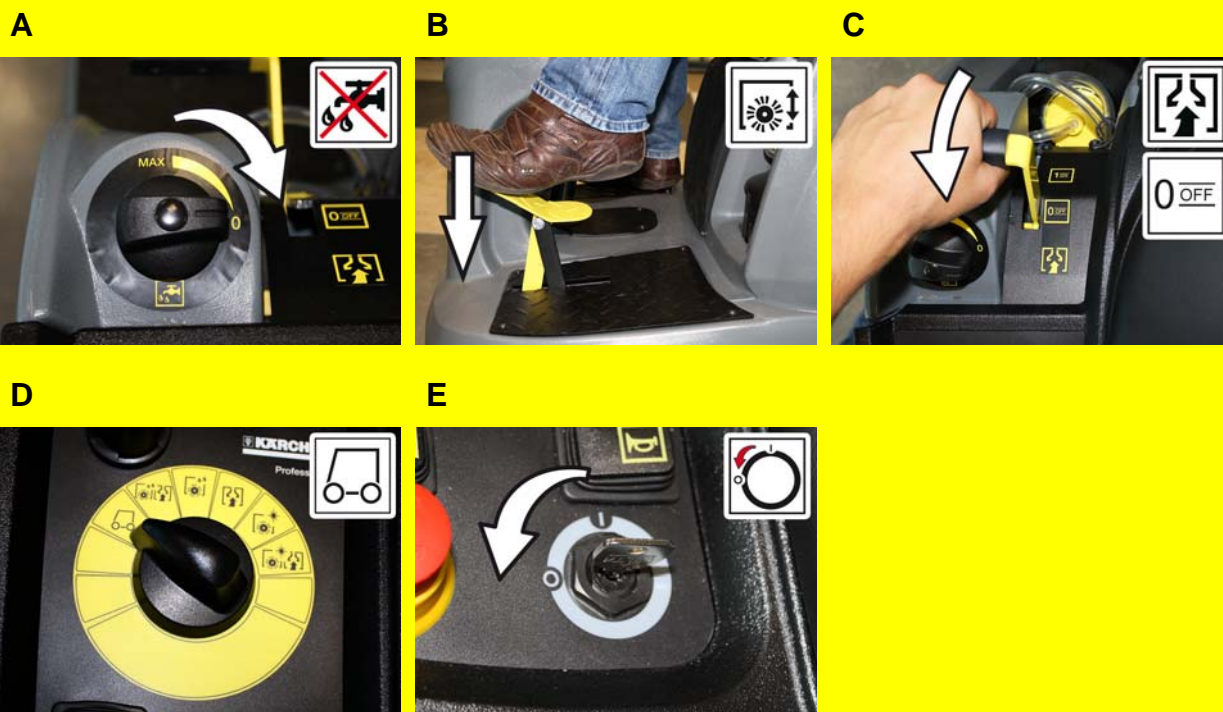


Lower the vacuum bar

- A Pull the lever up to raise/lower the vacuum bar, press toward the outside and lower. The suction process will start as soon as the level is moved down.

Finish operation

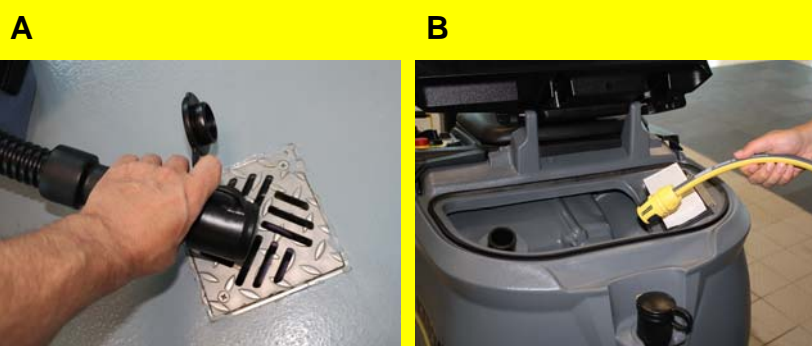
1



Turn off the appliance

- A Close the regulatory button for setting the water quantity.
- B Press down the front surface of the pedal to raise/lower the cleaning head and lock it.
- C Pull the lever to raise and lower the vacuum bar up and lock.
- D Turn the programme selection switch to Drive.
- E Turn main key to "0" and remove it.

2



Emptying the Dirt Water Reservoir

⚠ Warning

Please observe the local provisions regarding the wastewater treatment.

- A Take the water discharge hose from the support and lower above a suited collection device.
- B Rinse the dirty water tank with clear water. Take the water discharge hose from the support and lower above a suited collection device. Leave the cover open to let it dry.

3



Emptying the Fresh Water Tank

⚠ Warning

Please observe the local provisions regarding the wastewater treatment.

- A Unscrew the filter cup of the fresh water filter and let the fresh water tank drain completely. Replace the filter cup.


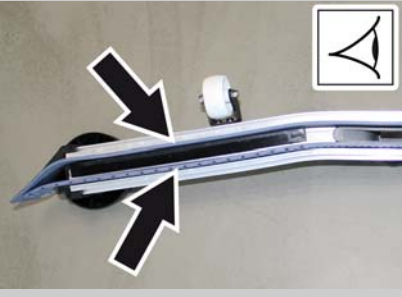
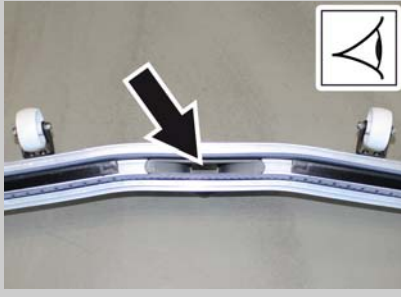


4



Charging battery

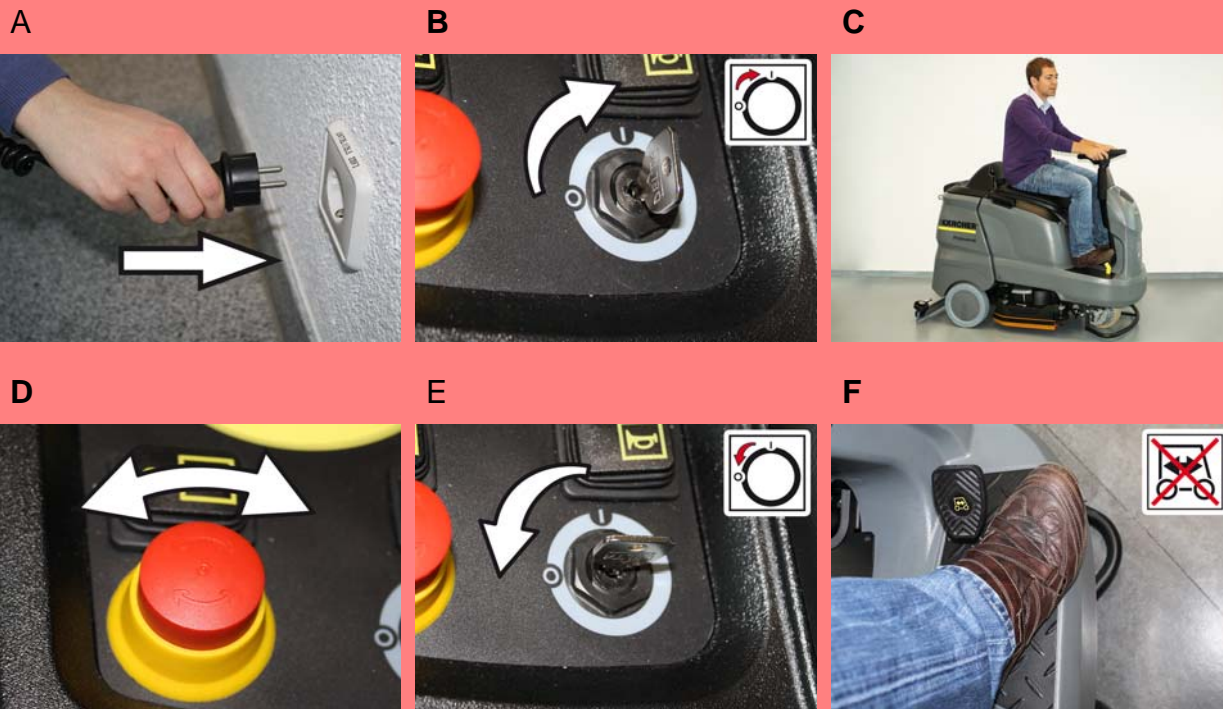
- A Tilt the seat upward. Take the power cord out of its holder and insert the plug into the socket. The display will show the charging status of the batteries.

Maintenance and care

		daily	monthly	Kärcher Customer Service
1	<p>A</p> 			
2	<p>A</p>  <p>B</p> 			
3	<p>A</p> 			
4				Only with R cleaning head Remove bulk waste container and empty it.
5				Clean the outside of the appliance with a damp cloth which has been soaked in mild detergent.
6	<p>A</p> 			A Clean the seals between dirt water reservoir and cover and check for tightness, replace if required.
7				Have the prescribed inspection carried out by the customer service.

Troubleshooting

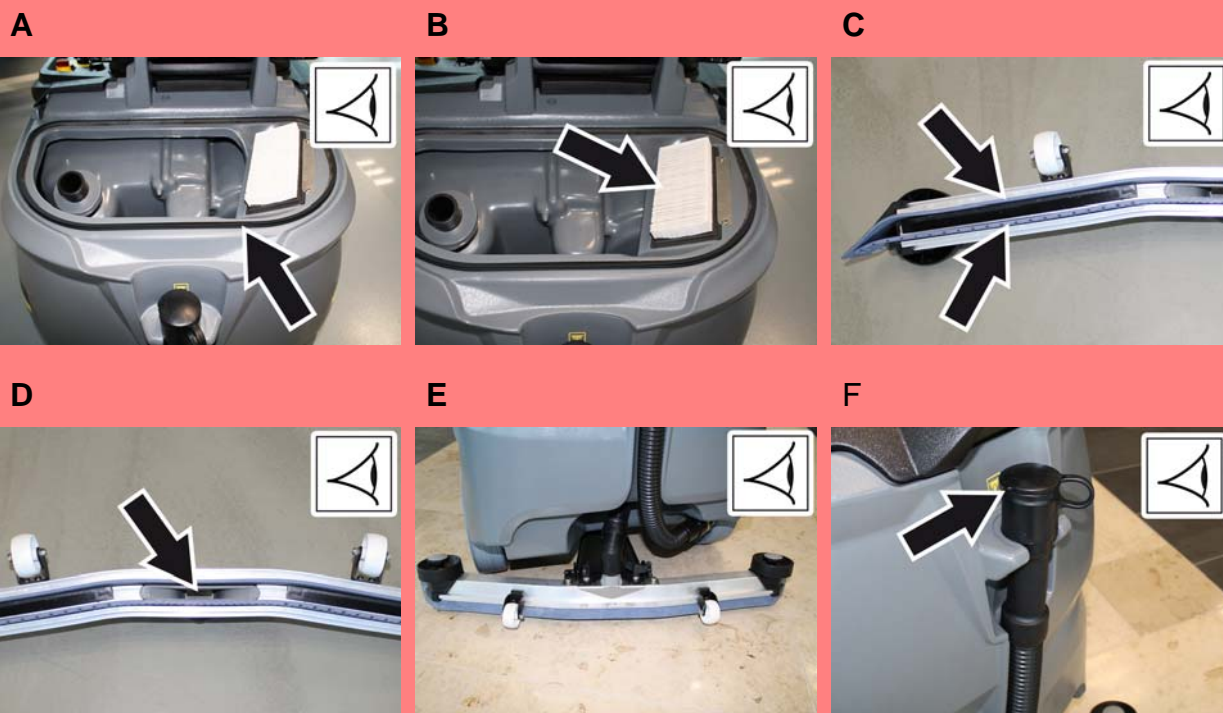
1



Appliance cannot be started

- A Insert battery plug.
- B Set main switch to "1"
- C Safety switch not activated, sit down on the seat.
- D Release emergency-stop button.
- E Set the key switch to "0". Wait approx. 10 minutes before turning the key switch to "1" again. If possible, use the unit only on level surfaces. Check immobilizing brake and foot brake if required.
- F Take your foot off the accelerator before switching on the main switch. If the fault recurs, call customer service.

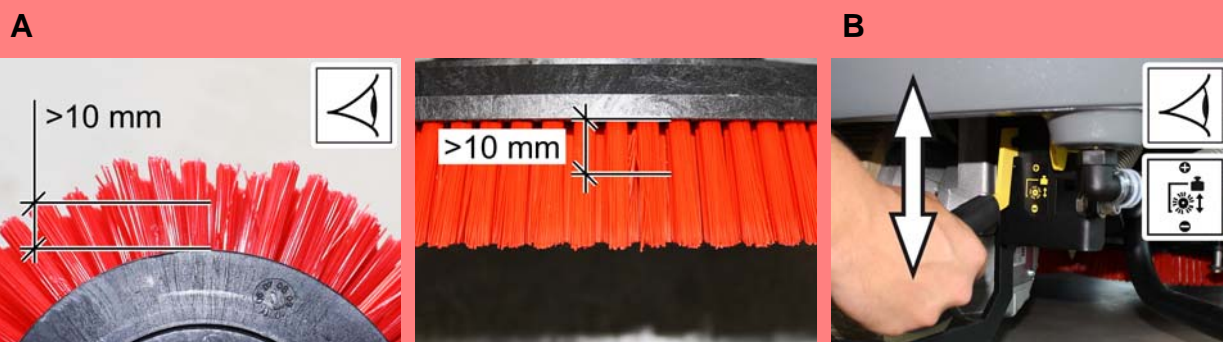
2



Insufficient vacuum performance

- A Clean the seals between dirt water reservoir and cover and check for tightness, replace if required.
- B Clean the flat fold filter in the waste water tank
- C Clean the vacuum lips on the vacuum bar, turn or replace if required.
- D Check suction hose for blockages; clean if required.
Check connection between suction hose and suction bar and suction hose and wastewater tank.
- E Check the setting of the vacuum bar.
- F Check if the cover on the dirt water discharge hose is closed

3



Insufficient cleaning result

- A Check brush for wear and tear and clean it. Check the brushes for wear (bristle length at least 10 mm), replace if required.
- B Adjust the contact pressure (not with Eco model)

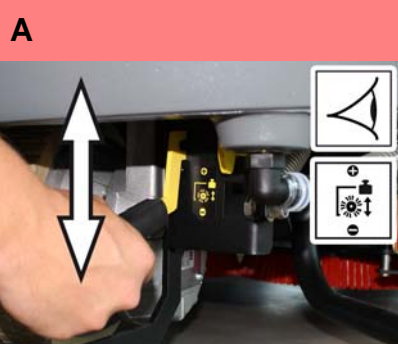
4



Insufficient water quantity

- A Check fresh water level, refill tank if necessary.
- B Adjust the water quantity using the regulating button according to the dirt on the floor covering.
- C Clean the fresh water filter.

5



Brushes do not turn

- A Reduce the contact pressure (not with Eco model)
 - Check the brushes for blockage due to foreign particles, remove them if found.
 - Motor overload, allow to cool down. Set the key switch to "0". Wait approx. 10 minutes before turning the key switch to "1" again.