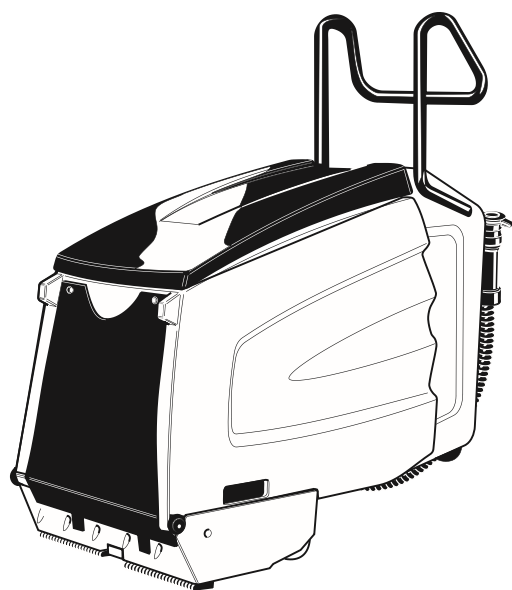


BR 47/35 ESC



English	3
Français	20
Español	37



Register and win!  
[www.kärcher.com/register-and-win](http://www.kärcher.com/register-and-win)

A square icon containing a checkmark, indicating a registration or completion status.



## **IMPORTANT SAFETY INSTRUCTIONS**

### **READ ALL INSTRUCTIONS BEFORE USING.**

#### **WARNING**

To reduce the risk of fire, electric shock, or injury:

- DO NOT LEAVE appliance unattended when plugged in. Unplug from outlet when not in use and before servicing.

#### **WARNING**

- TO REDUCE THE RISK OF ELECTRIC SHOCK-USE INDOORS ONLY
- Do not allow to be used as a toy. Close attention is necessary when used near children.
- Use only as described in this manual. Use only manufacturer's recommended attachments.
- Do not use with damaged cord or plug. If appliance is not working as it should, has been dropped, damaged, left outdoors, or dropped into water, return it to a service center.
- Do not pull or carry by cord, use cord as a handle, close a door on cord, or pull cord around sharp edges or corners. Do not run the unit over cord. Keep cord away from heated surfaces.
- Do not unplug by pulling on cord. To unplug, grasp the plug, not the cord.
- DO NOT handle plug or appliance with wet hands.
- Do not put any object into openings. Do not use with any opening blocked; keep free of dust, lint, hair, and anything that may reduce air flow.

- Keep hair, loose clothing, fingers, and all parts of body away from openings and moving parts.
- Turn off all controls before unplugging.
- Use extra care when cleaning on stairs.
- Do not use to pick up flammable or combustible liquids, such as gasoline, or use in areas where they may be present.
- Connect to a properly grounded outlet only. See Grounding Instructions.

### **SAVE THESE INSTRUCTIONS**

#### **GROUNDING INSTRUCTIONS**

This appliance must be grounded. If it should malfunction or break down, grounding provides a path of least resistance for electric current to reduce the risk of electric shock.

This appliance is equipped with a cord having an equipment-grounding conductor and a grounding plug. The plug must be inserted into an appropriate outlet that is properly installed and grounded in accordance with all local codes and ordinances.

#### **WARNING**

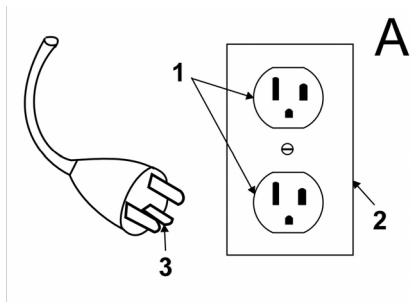
Improper connection of the equipment grounding conductor can result in a risk of electric shock. Check with a qualified electrician or service person if you are in doubt as to whether the outlet is properly grounded. Do not modify the plug provided with the appliance-if it will not fit the outlet, have a proper outlet installed by a qualified electrician.

This appliance is for use on a nominal 120-volt circuit, and has a grounded

plug that looks like the plug illustrated in Fig.A.

Make sure that the appliance is connected to an outlet having the same configuration as the plug. No adaptor should be used with this appliance.

### CONNECT TO A PROPERLY GROUNDED OUTLET ONLY



- 1 Grounded outlet
- 2 Grounded outlet box
- 3 Grounded pin

### OPERATING SAFETY RULES AND PRACTICES

#### Operator Responsibility

Safe operation is in the responsibility of the operator.

The operator shall be familiar with the operation and function of all controls and instruments before undertaking to operate the unit.

Before operating the unit, operators shall have read and be familiar with the operator's manual for the particular unit being operated and they shall also abide by the safety rules and practices in the following paragraphs.

Before operating any unit, the operator shall be familiar with unusual operating conditions which may require additional safety precautions or special operating instructions.

#### General

Before starting to operate the unit be in operating position.

Do not start or operate the unit, any of its functions or attachments, from any place other than from the designated operators position.

Before leaving the operator's position:  
A bring the unit to a complete stop;  
B if the unit must be on an incline, block the wheels.

Maintain a safe distance from the edge of ramps, platforms, and other similar working surfaces.

Do not add to, or modify the unit.

Do not block access to fire aisles, stairways or fire equipment.

#### Travelling

Yield the right of way to pedestrians and emergency vehicles such as ambulances and fire trucks.

Cross railroad tracks at an angle whenever possible. Do not park closer than 6 ft (1800 mm) to the nearest rail of a railroad track.

Keep a clear view of the path of travel and observe for other traffic, personnel, and safe clearances.

Under all travel conditions, operate the unit at a speed that will permit it to be brought to a stop in a safe manner.

Do not indulge in stunt driving or horseplay.

Slow down for wet and slippery floors.

Before driving over a dockboard or bridge plate, be sure that it is properly secured. Drive carefully and slowly across the dockboard or bridge plate, and never exceed its rated capacity.

When negotiating turns, reduce speed to a safe level consistent with the operating environment. Make the turns smoothly.

### **Operator care of the unit**

If the unit is found to be in need of repair or in any way unsafe, or contributes to an unsafe condition, the matter shall be reported immediately to the user's designated authority, and the unit shall not be operated until it has been restored to safe operating condition.

If during operation the unit becomes unsafe in any way, the matter shall be reported immediately to the user's designated authority, and the unit shall not be operated until it has been restored to safe operating condition.

Do not make repairs or adjustments unless specifically authorized to do so.

### **MAINTENANCE AND REBUILD PRACTICES**

Operation of the unit may be hazardous if maintenance is neglected or repairs, rebuilds, or adjustments are not performed in accordance with the manufacturer's design criteria. Therefore, maintenance facilities (on or off premises), trained personnel, and detailed procedures shall be provided.

Maintenance and inspection of the unit shall be performed in conformance with the following practices:

- A a schedules planned maintenance, lubrication, and inspection system shall be followed; consult the manufacturer's recommendations.
- B only trained and authorized personnel shall be permitted to maintain, repair, adjust, and inspect the unit, and in accordance with manufacturer's specifications.

Avoid fire hazards and have fire protection equipment present in the work area. Do not use open pans of fuel or flammable cleaning fluids for cleaning parts.

### **FIRE SAFETY STANDARD**

Any unit not in safe operating condition shall be removed from service.


Repairs shall not be made in Class I, Class II, and Class III locations.

Fire Prevention: The unit shall be kept in a clean condition and reasonably free of lint, excess oil, and grease.

Noncombustible agents are preferred for cleaning the unit. Flammable liquids [those having flash points at or above 100°F (37,8°C)] are not allowed. Precautions regarding toxicity, ventilation, and fire hazard shall be appropriate for the agent or solvent used.

Nameplate Visibility: The unit type designations as shown on the nameplate and the type markers shall not be covered over with paint so that their identification information is obscured.

The unit shall not be used in classified areas.

 Please read and comply with these original instructions prior to the initial operation of your appliance and store them for later use or subsequent owners.

## Contents

Safety instructions . . . . .	EN	4
Function . . . . .	EN	4
Proper use . . . . .	EN	5
Environmental protection . .	EN	5
Operating and Functional Elements . . . . .	EN	6
Before Startup . . . . .	EN	7
Start up. . . . .	EN	7
Operation . . . . .	EN	8
Shutting down . . . . .	EN	10
Care and maintenance. . . .	EN	11
Transport . . . . .	EN	13
Storage. . . . .	EN	13
Troubleshooting . . . . .	EN	14
Technical specifications . . .	EN	16
Warranty. . . . .	EN	16
Accessories and Spare Parts	EN	16

## Safety instructions

### For operator:

Please ensure that all users of the machine have read and understood the contents of this Operating Instructions Manual and are familiar with the local regulations about work safety. The users must have been technically trained to use this appliance.

### For users:

Before using the appliance for the first time, read and observe these operating instructions and the accompanying brochure: Safety information for brush cleaning units and spray-extraction units, No. 5.956-251.0.

## Safety Devices

Safety devices serve to protect the user and must not be rendered in operational or their functions bypassed.

### Foot pedal

The appliance can only be started when you press the foot pedal fully downwards. The machine stops when you release the foot pedal.

## Hazard levels

### **⚠ DANGER**

*Pointer to immediate danger, which leads to severe injuries or death.*

### **⚠ WARNING**

*Pointer to a possibly dangerous situation, which can lead to severe injuries or death.*

### **⚠ CAUTION**

*Pointer to a possibly dangerous situation, which can lead to minor injuries.*

### **ATTENTION**

*Pointer to a possibly dangerous situation, which can lead to property damage.*

## Function


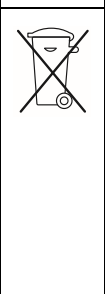
From the stationary escalator cleaner, detergent fluid (from the fresh water tank) is applied to the running traveller/ escalator. The rolling brushes brush the detergent against the running direction into the ridges of the traveller/ escalator. In the same working step, the dirty detergent is sucked into the dirt water tank of the machine via the intake brushes.

## Proper use

Use this appliance only as directed in these operating instructions.

- The appliance may only be used to clean the stepping areas of travellators/ escalators.
- The running or movement direction of the unit to be cleaned must be adjusted in such a way that the travellator/ escalator moves away from the machine.
- To clean the escalator, place the machine only at the lower end of the escalator.
- The appliance may only be equipped with original accessories and spare parts.

## Environmental protection

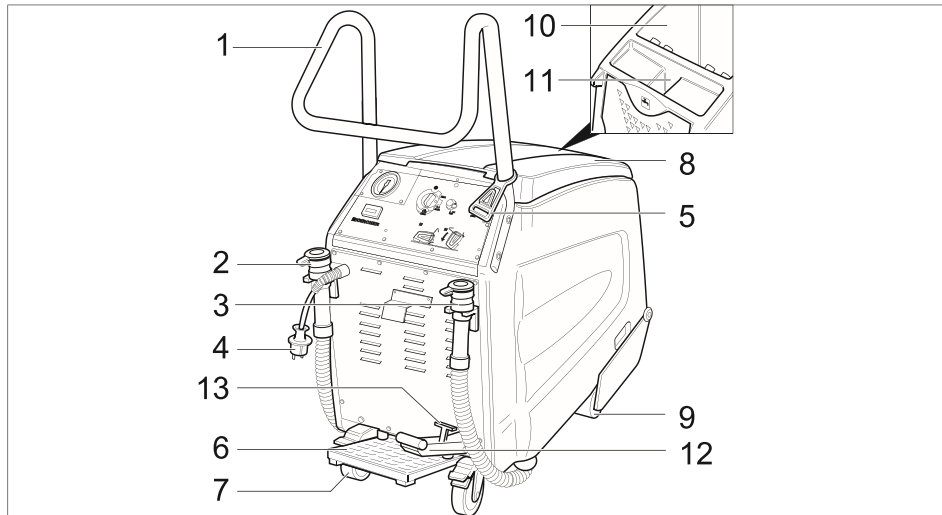
	The packaging material can be recycled. Please do not throw the packaging material into household waste; please send it for recycling.
	Old appliances contain valuable materials that can be recycled; these should be sent for recycling. Batteries, oil, and similar substances must not enter the environment. Please dispose of your old appliances using appropriate collection systems.

### Notes about the ingredients (REACH)

You will find current information about the ingredients at:

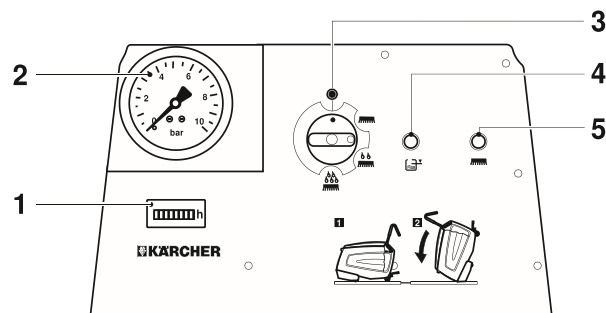
**[www.kaercher.com/REACH](http://www.kaercher.com/REACH)**

## Operating and Functional Elements



- |                                   |   |
|-----------------------------------|---|
| 1 Push handle                     | 8 Cover waste water tank                      |
| 2 Drainage hose for fresh water   | 9 Front wheels                                |
| 3 Dirt water discharge hose       | 10 waste water tank                           |
| 4 Mains plug                      | 11 Fresh water reservoir filler neck          |
| 5 Strain relief clamp             | 12 Pedal for raising/ lowering the brush head |
| 6 Foot pedal                      | 13 Lever to lock the brush head               |
| 7 Rear wheels with stopping lever |   |

## Operator console



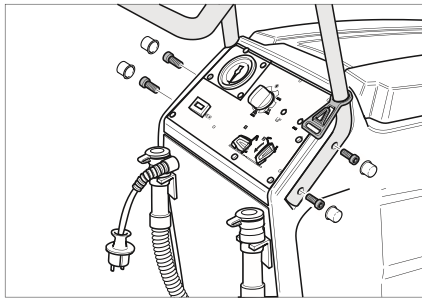
- |  |
|--|
| 1 Operating hour counter                 |
| 2 Display pump pressure                  |
| 3 Power switch                           |
| 4 Indicator lamp "Dirt water tank full"  |
| 5 Indicator lamp "Brush motor over-load" |



## Before Startup

- Remove all packaging material except the wooden palette.

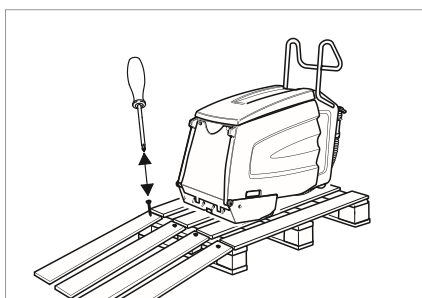
## Installing the pushing handle



- Insert the pushing handle in the grooves on the appliance.
- Fasten the pushing handle with the 4 screws enclosed in the packet.
- Fasten the covering flaps.
- Hang in the strain relief clamp at the pushing handle.

## Unloading

- Lock the rear wheels; remove the wooden blocks used for stopping the wheels.
- Four indicated floor boards of the pallet are fastened with screws. Unscrew these boards.



- Place the boards on the edge of the pallet. Place the boards in such a way that they lie in front of the four wheels of the machine. Fasten the boards with screws.

- Slowly push the machine down from the ramp.

## Removing anti-frost agents

### Note:

At the time of manufacturing the appliance, it has already been flused using an anti-frost agent. Before starting the machine for the first time, you need to first remove the anti-frost agent.

- Fill in 10 litres of fresh water in the fresh water reservoir.
- Press the foot pedal.
- Set the machine switch to basic cleaning.
- Keep the machine running until the pressure on the manometer falls.

## Start up

### Preparing the traveller/escalator

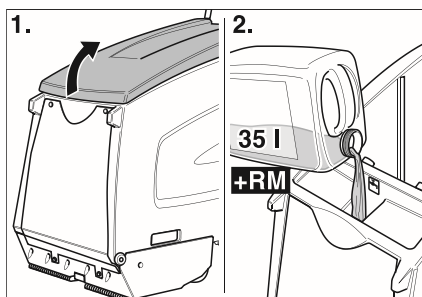
### ⚠ DANGER

*Risk of injury! The appliance can get stuck and be dragged away by the traveller/ escalator. Before starting cleaning, check the stepping areas and the ridge profile to see that there are no deformations or any objects stuck therein. To be on the safer side, make sure that you know where the emergency switch-off button of the traveller/ escalator is located.*

- Cordon off the traveller/ escalator as long as cleaning operations are on and the stepping areas are still wet.
- Switch on the traveller/ escalator.
- Ensure that the running direction of the traveller/ escalator is away from the machine.

## Preparing the appliance

- Check whether the combs and the guide rails of the machine match the make of the traveller/ escalator. Replace the combs and the guide rails, if required.



- Open the cover of the fresh water reservoir.
- Fill in fresh water.

### ATTENTION

*Risk of damage. Only use the recommended detergents. With other detergents, the operator bears the increased risk regarding the operational safety and danger of accident.*

*Only use detergents that are free from solvents, hydrochloric acid and hydrofluoric acid.*

*Follow the safety instructions for using detergents.*

### Note:

Do not use highly foaming detergents.

- Pour in detergent.
- Close the cover of the fresh water reservoir.
- Drive the machine in front of the traveller/ escalator platform.

## Operation

### ⚠ DANGER

*Risk of injury!*

- Do not use the appliance on inclines.
- Press the foot lever with only one foot. The other foot must be placed firmly on the ground.
- Hold the pushing handle firmly with at least one hand.
- Loose fitting clothes and jewellery can get entangled in the moving parts of the traveller/ escalator. Hence, remove jewellery and wear clothes fitting well on the body and safety shoes.

## Cleaning types

The cleaning time depends on the level of dirt and is divided into three cleaning types.

### Dry vacuum cleaning



Use dry vacuum clean on the travellers/ escalators that have already been cleaned.

### Regular cleaning



Cleaning slightly dirty travellers/ escalators (normally, at short regular intervals). At this setting, the appliance works with reduced quantity of water. The water pump works with regular strokes.

### Basic cleaning



Cleaning very dirty travellers/ escalators (normally done when the escalator has not been cleaned for a long time). Areas with heavy dirt and stains should ideally be cleaned manually.

### Tips for cleaning

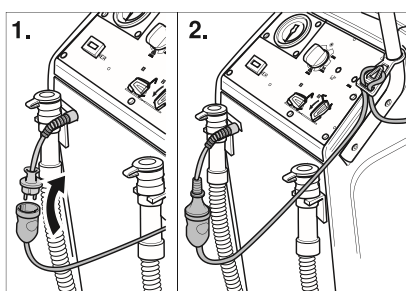
- First clear off loose, coarse dust manually.
- Remove hard objects (such as stones) from the ridges of the steps.
- Clean the front side of the escalator steps manually.
- Clean the stepping areas in overlapping strips. To do that, first move the appliance from the working position and place it on the side.
- Observe the steps while cleaning. They should be moist but not wet. There should not be any foam residue.
- First do moist cleaning (with detergent liquid) and then dry (by setting the appliance to dry vacuum cleaning).
- Then clean using clear water so as to remove detergent residues.

### Cleaning operations

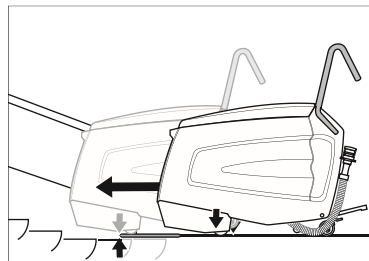
#### **⚠ DANGER**

*Risk of injury and electrical shock! Always lay the extension cable in such a way that it does not get jammed or crushed and also does not cause somebody to stumble over it.*

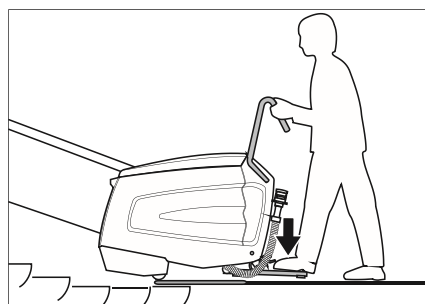
- Plug in the mains plug.



- Insert the end of the extension cable as a loop in the strain relief clamp.
- Lock the rear wheels.



- Place the machine on the platform in such a way that the front wheels do not touch the first step of the moving traveller/ escalator.
- Press pedal for lowering the brush head. The brush head will be lowered and the lock lever will arrest in its position.



- Press the foot pedal with one foot and while doing so move the machine a little back and forth towards the side. The machine will position itself centrally in the grooves of the steps; you will then hear a rustling sound.

#### **⚠ DANGER**

*Risk of injury! Do not push the appliance onto the escalator any further than the indications given below. Otherwise, the machine will get dragged off by the escalator. In case of danger, immediately press the emergency stop switch of the escalator.*

The cleaning head must lie flat on the escalator.

- Set the appliance switch to regular or basic cleaning.

The machine is started.

**Note:**

The machine switches off when the dirt water reservoir is full. To restart the machine, empty the dirt water reservoir and briefly set the appliance switch to "0".

- Continue cleaning until the traveller/ escalator has completed 1 or 2 rounds. Then move the machine towards the side and start a new cleaning process.

**Moving the appliance to the side**

- Set the appliance switch to 'dry vacuum cleaning' position. Dry vacuum cleaning is activated.
- Let the pump pressure fall to 0 bar.
- Set the appliance switch to "0".
- Release the foot pedal.
- Press pedal for raising the brush head. Brush head is raised.
- Move the appliance to the side.
- Press pedal for lowering the brush head. The brush head will be lowered and the lock lever will arrest in its position.
- Press the foot pedal and place the machine centrally in the ridges of the steps.
- Set the appliance switch to regular or basic cleaning.
- Then clean using clear water so as to remove detergent residues.

**⚠ DANGER**

*Risk of injury! To refill detergent, always move out the machine first from the working position.*

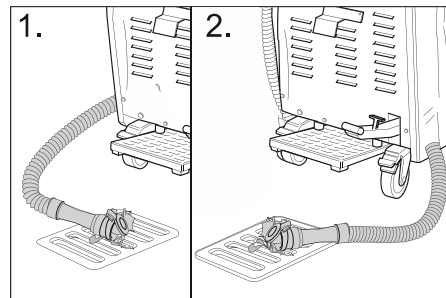
**Shutting down**

**Complete cleaning**

- Set the appliance switch to 'dry vacuum cleaning' position. Dry vacuum cleaning is activated.
- Let the pump pressure fall to 0 bar.
- Set the appliance switch to "0".
- Release the foot pedal.
- Activate the lever to lock and the pedal to raise the brush head. Brush head is raised.
- Release the rear wheels.
- Drive out the machine from the working position and the podium until it is on firm ground.

**Turn off device**

- Pull out the mains plug.



- Drain off and dispose the remaining detergent fluid.
- Drain out the dirt water and dispose it off.
- Clean the inside and outside of the machine. Rinse the tanks with clear water.
- Store the machine in a frost-free room on an even and clean floor.
- Lock the rear wheels.
- Remove the cordon from the traveller/ escalator only when the entire working area is dry again. There is risk of accident on account of slipping even if the traveller/ escalator is slightly moist.

## Care and maintenance

### **⚠ DANGER**

*Risk of injury!*

*Before doing any work on the machine:*

- Set the appliance switch to "0".
- Pull out the mains plug.
- Lock the rear wheels.
- Drain off and dispose the remaining detergent fluid.
- Drain out the dirt water and dispose it off.

## Cleaning the device

### **ATTENTION**

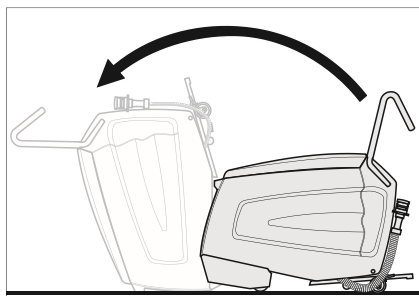
*Risk of damage! Do not wash down the appliance with water and do not use aggressive detergents.*

- Clean the outside of the appliance with a damp cloth which has been soaked in mild detergent.
- Wipe the insides of the dirt water reservoir.
- Clean the fluff filter.

## Maintenance intervals

### **Tilt the machine in the maintenance position**

The escalator cleaner must be accessible from the bottom side to perform any testing or maintenance jobs on the machine.



- Take the help of another person to tilt the machine forward until it stands on the front casing.

### **Daily before use**

- Check spray pattern of the nozzles.
- Check if suction nozzles are dirty.
- Check emergency stop function of the foot pedal.

Press the foot pedal, set the appliance switch to 'dry vacuum cleaning', the appliance must run.

Release the foot pedal; the appliance must stop.

Get the machine repaired only by authorised customer service agents.

- Check the locking of the rear wheels.

Get the machine repaired only by authorised customer service agents.

- Check for wear and tear:

Roller brushes, intake brushes, combs, guide rails, hoses, stopper and front wheels. Replace stopper and front wheels, if required, only through authorised customer service agents.

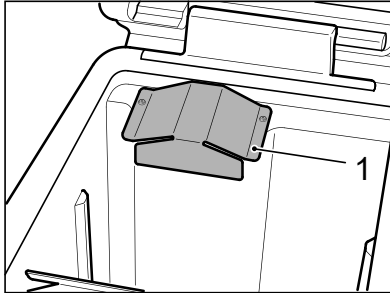
- Check mains cable and plug for damage or breakage. Get them replaced only through customer service agent or an electrician.

### **After 100 operating hours**

- Check if all fasteners are fastened tightly.
- Check the drive belt for tension and wear (Customer Service).

## Maintenance Works

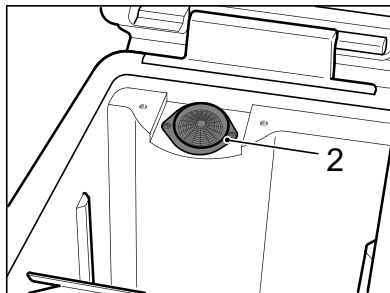
### Clean the fluff filter



- Unscrew the tin cover plate using a torx spanner.

#### Note:

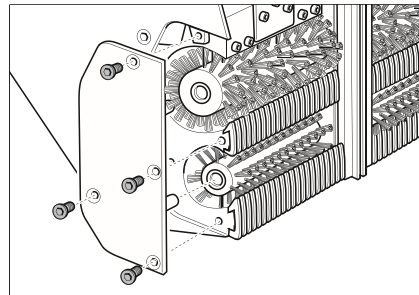
You will find a torx spanner in the holder of the drainage hose of the dirt water reservoir.



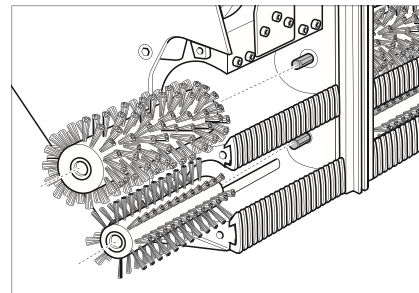
- Clean the fluff filter.
- Replace the tin plate.

### Replacing the roller brushes and the intake brushes

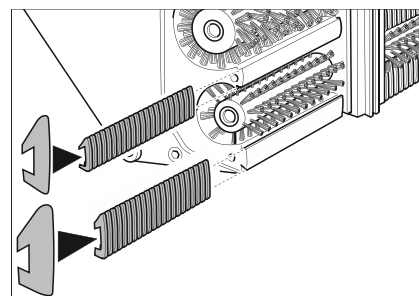
- Loosen all the four screws and remove the bearing lid.



- Remove the roller brushes (large) and intake brushes (small) and replace them (pay attention to the hexagonal intake of the brushes!). Also check simultaneously the combs and the guide rails and replace or clean them as required.

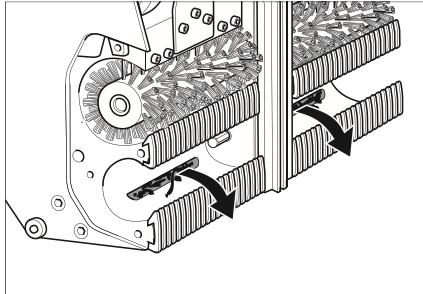


### Replacing the combs



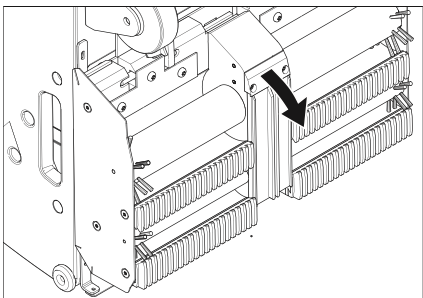
- Remove the combs and replace them. To do this, slide the inlet combs on the narrow rails and the outlet combs on the wider rails.

### Cleaning the suction nozzles



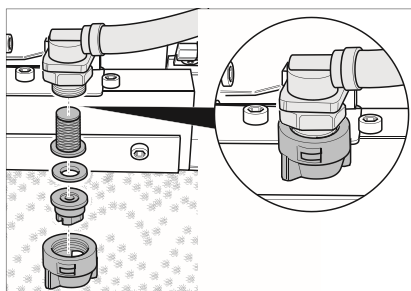
- Pull out all dirt particles from the suction nozzles; do not push them in.

### Replacing the guide rails



- Loosen the fastening screws of the holder for the guide rails.
- Dismantle the guide rails.
- Insert the guide rails in reverse sequence. Ensure that they sit properly.

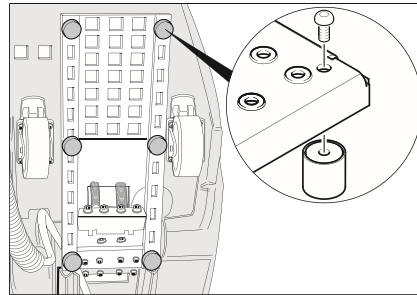
### Check nozzles and filters for detergents



- Loosen the union joint. Remove nozzle, washer and sieve.

- Clean the nozzle or insert a new nozzle in the union joint.
- Insert washer and sieve and tighten the union joint by hand.

### Replacing the pad



- Unscrew the pad with a screw-driver and replace it.

## Transport

### ⚠ DANGER

*Risk of injury! Do not drive over slopes greater than 5°. Never transport the machine over the traveller/ escalator.*

### ⚠ CAUTION

*Risk of personal injury or damage! Mind the weight of the appliance during transport.*

- Lock the rear wheels.
- Secure the machine with clamping belts and ropes so that it doesn't slip off.

## Storage

### ⚠ CAUTION

*Risk of personal injury or damage! Consider the weight of the appliance when storing it. This appliance must only be stored in interior rooms.*

## Troubleshooting

**⚠ DANGER**

*Risk of injury!*

*Before doing any work on the machine:*

- ➔ Set the appliance switch to "0".
- ➔ Pull out the mains plug.

- ➔ Lock the rear wheels.
- ➔ Drain off and dispose the remaining detergent fluid.
- ➔ Drain out the dirt water and dispose it off.

Fault	Remedy
Motor/pump do not start or switch off automatically when the machine is on.	Dirt water reservoir is full; empty it. Press the foot pedal.
Indicator lamp "Dirt water tank full" is glowing.	Dirt water reservoir is full; empty it.
Working pressure of min. 3 bar is not building up.	If fresh water reservoir is empty, then fill it up (35 litres). Check pipes to see if there are any leaks. If required, get it sealed by customer service. Check the nozzles. Get customer service to clean the pump.
Cleaned steps are too wet.	Check the combs for wear, replace if required. Check the condition of the seal of the dirt water reservoir for damages, replace if required. Check the intake brushes for wear, replace if required. Check suction nozzles and hose for blockages; clean if required. Check whether the waste water tank lid is completely closed. Check whether the correct combs have been installed.



Washed steps are not clean.	Check detergent nozzles to see if they are blocked; clean or replace if required.
	Check the condition of the seal of the dirt water reservoir for damages, replace if required.
	Check the brush rollers and intake brushes for wear, replace if required.
	Check detergent. Check the concentration of the detergent solution.
	Check the intake brushes for wear, replace if required.
	Check whether the waste water tank lid is completely closed.
	Check whether the correct combs have been installed.
Indicator lamp "Brush motor overload" is glowing.	Set appliance switch to "0", then turn it back to the desired operating position. If the fault recurs often, call customer service.
	Remove belts or cords from brushes.

## Technical specifications

Performance data		
Nominal voltage	V	120
Frequency	Hz	60
Control voltage	V	12
Rated power (max.)	W	1360
Suction engine output	W	800
Brush engine output	W	650
Protective class		IPX4
Pump pressure	psi (kPa)	43...58 (300-400)
Water Consumption	gal/h (l/h)	5,5...11 (25-50)
Speed of roller brushes	1/min	870
Speed of intake brushes	1/min	1090
Dimensions and weights		
Working width	in (mm)	18,5 (470)
Width	in (mm)	18,9 (480)
Length	in (mm)	45,3 (1150)
Height with pushing handle	in (mm)	41,3 (1050)
Height without pushing handle	in (mm)	29,9 (760)
Fresh/waste water tank volume	gal (l)	9,2/9, (35/35)
Transport weight	lbs (kg)	ca. 198 (90)
Permissible overall weight	lbs (kg)	ca. 276 (125)
Values determined as per EN 60335-2-72		
Total oscillation value	m/s <sup>2</sup>	0,3

Uncertainty K	m/s <sup>2</sup>	0,2
Sound pressure level L <sub>pA</sub>	dB(A)	<75
Uncertainty K <sub>pA</sub>	dB(A)	2
Sound power level L <sub>WA</sub> + Uncertainty K <sub>WA</sub>	dB(A)	90

## Warranty

The warranty terms published by the relevant sales company are applicable in each country. We will repair potential failures of your appliance within the warranty period free of charge, provided that such failure is caused by faulty material or defects in manufacturing. In the event of a warranty claim please contact your dealer or the nearest authorized Customer Service centre. Please submit the proof of purchase.

## Accessories and Spare Parts

### ⚠ DANGER

*Risk of injury and electrical shock! Repair works may only be performed by the authorised customer service.*

- Only use accessories and spare parts which have been approved by the manufacturer. The exclusive use of original accessories and original spare parts ensures that the appliance can be operated safely and trouble free.
- At the end of the operating instructions you will find a selected list of spare parts that are often required.
- For additional information about spare parts, please go to the Service section at [www.kaercher.com](http://www.kaercher.com).

## Accessories

Accessories	Type	Part no.:	Description
Roller brushes, soft (standard)		5.762-266.0	Roller brushes for regular cleaning (appliance needs 2 pieces).
Roller brushes, hard		5.762-267.0	Roller brushes for regular cleaning, for removing stubborn dirt (appliance needs 2 pieces).
Intake brushes		5.762-268.0	For transporting the dirt water transport from the traveller/ escalator to the suction nozzles (appliance requires 2 pieces).
Inlet combs, blue	Kone	6.369-509.0	Combs for adjusting the appliance to the respective traveller/ escalator brand (set with 2 pieces).
Outlet combs, blue	Kone	6.369-519.0	
Inlet combs, black	OTIS	6.369-510.0	
Outlet combs, black	OTIS	6.369-520.0	
Inlet combs, green	Schindler	6.369-511.0	
Outlet combs, green	Schindler	6.369-521.0	
Inlet combs, white	CNIM	6.369-512.0	
Outlet combs, white	CNIM	6.369-522.0	
Groove scraper	Kone und Schindler	6.369-507.0	For manual pre-cleaning (removing stones, chewing gum and other sticky dirt).
	OTIS und Thyssen	6.369-508.0	
Set Handpads	Kone	6.369-513.0	For manually cleaning the front side of the steps (set with 5 green pads).
	OTIS	6.369-514.0	
	Schindler	6.369-515.0	
	Thyssen	6.369-516.0	
Detergent	RM 758		For cleaning by machine.
Detergent	RM 759		For basic cleaning (30 kg). For manually cleaning very dirty spots.